



Sign



Storage



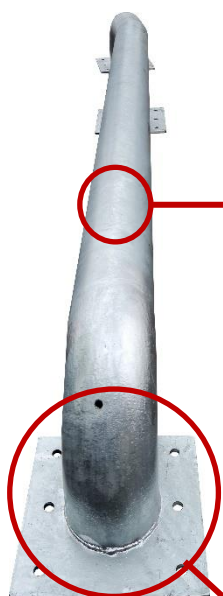
Chain

VISO

Date : 08/09/2023

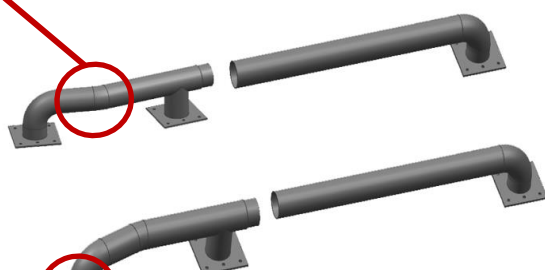
FICHE TECHNIQUE

BARCAM3 – Jeu de 2 guides roue camion G/D



Ø 159 mm

6 fixations par platine = 18 fixations au total



Livrés en 2 parties

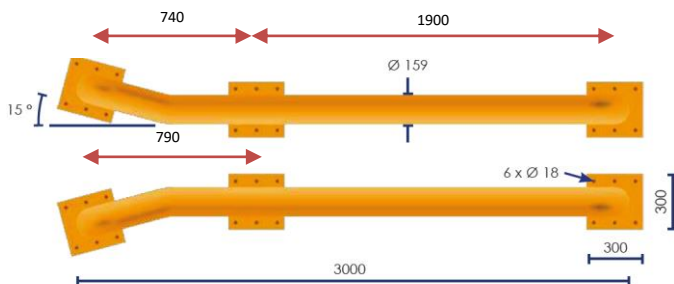
Gamme : SIGN

Code douane : 7326909800

EAN : 3321360020246

REF	Longueur (mm)	Largeur (mm)	Diamètre (mm)	Nb. Fixations	POIDS (kg)
BARCAM3	3000	300	159	2 x 18	44

- **Fabriqué en** acier galvanisé à chaud
- **Coloris** : gris



Caractéristiques :

- Guide roues pour poids lourds
- Fixations en option (BARCAMFIX6SB : Ø 16 mm – Long. 200 mm)

Option :
BARCAMFIX6SB





Sign



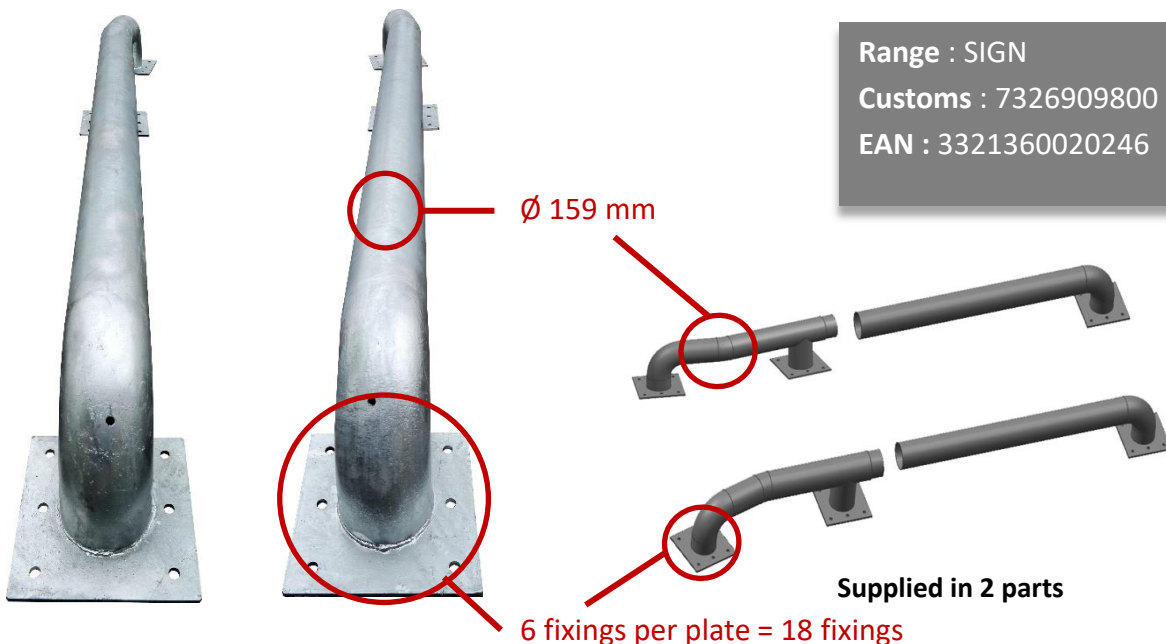
Storage



Chain

TECHNICAL SHEET

BARCAM3 – Pair of 2 guiding rail L/R

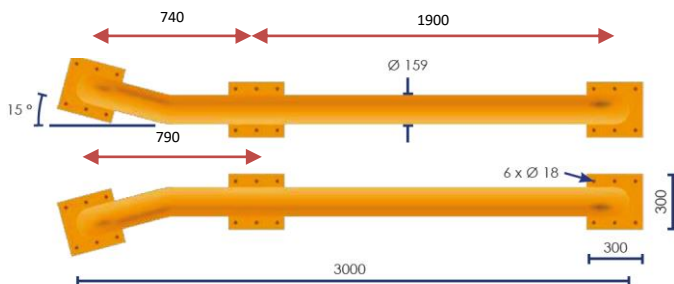


REF	Length (mm)	Width (mm)	Diameter (mm)	Nb. Fixations	Weight (kg)
BARCAM3	3000	300	159	2 x 18	44

- **Made of** galvanized steel
- **Color** : grey

Specifications :

- Heavy duty wheel guide
- Optional fasteners (BARCAMFIX6SB : Ø 16 mm - Length 200 mm)



Option :
BARCAMFIX6SB





Sign



Storage



Chain

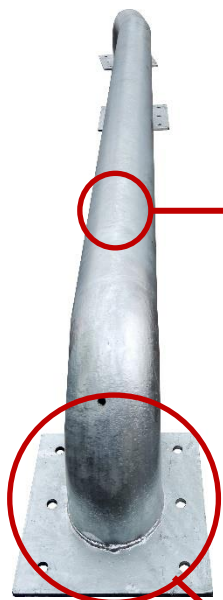
VISO

Date : 08/09/2023



FICHA TECNICA

➤ BARCAM3 – Juego de 2 guías de rueda de camión



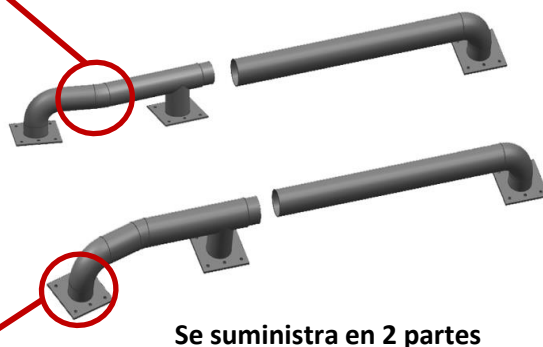
Ø 159 mm

6 fijaciones per pletina = 18 fijaciones

Gama : SIGN

Aduanas : 7326909800

EAN : 3321360020246



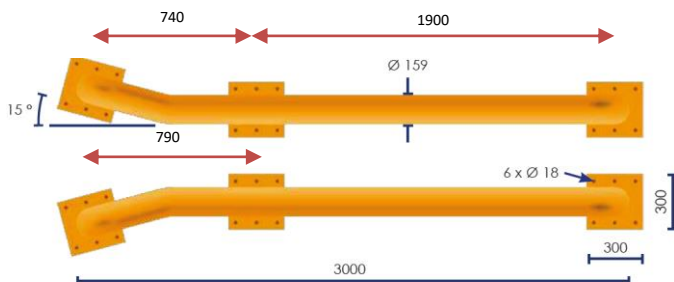
Se suministra en 2 partes

REF	Largo (mm)	Ancho (mm)	Diametro (mm)	Fijaciones	Peso (kg)
BARCAM3	3000	300	159	2 x 18	44

- Hecho en acero galvanizado
- Color : gris

Características

- Guía de ruedas de alta resistencia
- Fijaciones opcionales (BARCAMFIX6SB: Ø 16 mm – Long. 200 mm)



Opción :
BARCAMFIX6SB

